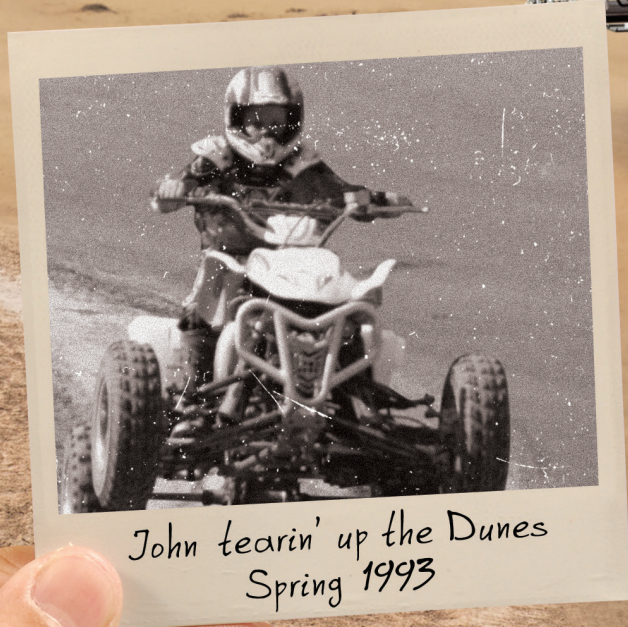




2019 TOY HAULERS



John tearin' up the Dunes
Spring 1993



2
YEAR
LIMITED
WARRANTY

OCTANE SL



260 MAIN INTERIOR



260 BATHROOM



272 KITCHEN



260 FRONT TO BACK



260 QUEEN BED

INTERIOR DÉCOR

WALNUT			GRANITE			FLOORING		
	SOFA	MAIN ACCENT		SOFA	MAIN ACCENT		LINOLEUM	CARPET

Unloaded Vehicle Weight (UVW): Sometimes referred to as "Dry Weight," UVW means the typical weight of this trailer as built at the factory. The UVW, as used in product literature and other promotional materials, does not include cargo, fresh water, propane, options or dealer-installed accessories.

Gross Vehicle Weight Rating (GVWR): GVWR means the maximum permissible weight of the trailer, including the UVW plus personal items, all cargo, fluids, options and dealer-installed accessories. The GVWR is equal to or greater than the sum of the UVW and the CCC.

Cargo Carrying Capacity (CCC): CCC means the maximum weight of personal items, food, fresh water, propane, tools, other cargo and dealer-installed accessories that can be carried by the trailer. CCC is equal to or less than GVWR minus UVW. The addition of options will decrease the CCC.

Hitch Weight (HW): The hitch weight, as used in product literature and other promotional materials, does not include cargo, fresh water, propane gas, options or dealer-installed accessories. The addition of these types of items will either add to or subtract from the stated hitch weight.

It is important for your safety and enjoyment that your tow vehicle be adequately sized and equipped to tow and handle the GVWR of the RV you select. Review weights and rating of your tow vehicle and consult a competent advisor for questions or advice. Whether you are new to RVing or a veteran, get a feel for the performance of your tow vehicle before heading out on the roadways. When you tow an RV, you must drive differently than when you drive a single vehicle. Practice hooking up, driving, backing up and braking in a safe environment or seek out professional instruction. Jayco affixes a weight label to each RV which lists weight information for that vehicle. See specifications chart.

OCTANE SL FLOORPLANS

161 7' RAMP W/ SPRING ASSIST, 8' CARGO AREA, 11' AWNING

209 7' RAMP W/ SPRING ASSIST, 10' AWNING

210 7.75' X 10' CARGO AREA, 15' AWNING

222 7' RAMP W/ SPRING ASSIST, 8' 6" CARGO AREA, 18' AWNING

260 OPTIONS: A, B 7' RAMP W/ SPRING ASSIST, 12' 8" CARGO AREA, 20' AWNING

265 OPTIONS: A, B 7' RAMP W/ SPRING ASSIST, 12' CARGO AREA, 20' AWNING

272 OPTIONS: A, B 7' RAMP W/ SPRING ASSIST, 8' 3" CARGO AREA, 15' 4" CARGO AREA, 18' AWNING

273 7' RAMP W/ SPRING ASSIST, 8' 3" CARGO AREA, 7'-10" CARGO AREA, 18' AWNING

283 7' RAMP W/ SPRING ASSIST, 15' 2" CARGO AREA, 18' AWNING

LEGEND		OPTIONS	
	STORAGE	A	B
	TRAILER HITCH		
	BATHROOM SINK		
	MEDICINE CABINET		
	MICROWAVE		
	OVERHEAD CABINETS		
	REFRIGERATOR		
	WARDROBE		

OCTANE SL SPECS

FLOORPLAN	EXTERIOR TRAVEL LENGTH	EXTERIOR WIDTH	EXTERIOR HEIGHT (WITH A/C)	INTERIOR HEIGHT	UNLOADED VEHICLE WEIGHT	DRY HITCH WEIGHT	GROSS VEHICLE WEIGHT RATING	CARGO CARRYING CAPACITY	FRESH WATER CAPACITY (INCLUDES WATER HEATER)	GREY WASTE WATER CAPACITY	BLACK WASTE WATER CAPACITY	SLEEP CAPACITY
161	20' 8"	8' 6"	11' 3"	7' 5"	4,700	710	7,500	2,800	59.2	28	45.4	4
209	25' 3"	8' 6"	11' 4"	7' 4"	5,520	755	8,000	2,480	59.2	45.4	45.4	6
210	36' 5"	8' 6"	12' 1"	7' 5"	6,800	860	9,750	2,950	102	45.4	45.4	6 - 9
222	26' 3"	8' 6"	11' 3"	7' 4"	5,450	795	8,000	2,550	59.2	45.4	45.4	6
260	30' 5"	8' 6"	11' 11"	7' 5"	6,260	785	9,995	3,735	102	45.4	45.4	8 - 10
265	31' 4"	8' 6"	11' 8"	7' 4"	6,680	965	10,500	3,820	102	45.4	45.4	8 - 10
272	33' 11"	8' 6"	12' 1"	7' 4"	7,090	1,107	10,500	3,410	102	45.4	45.4	9 - 12
273	30' 10"	8' 6"	11' 11"	7' 4"	6,400	1,080	9,950	3,550	59.2	45.4	45.4	6
283	TBD	8' 6"	TBD	TBD	TBD	TBD	TBD	TBD	TBD	TBD	TBD	7 - 8

TALON



413T MAIN INTERIOR



393T KITCHEN



392T BUNK ROOM



392T MASTER BEDROOM



4113 MAIN INTERIOR



4212 MASTER BATH

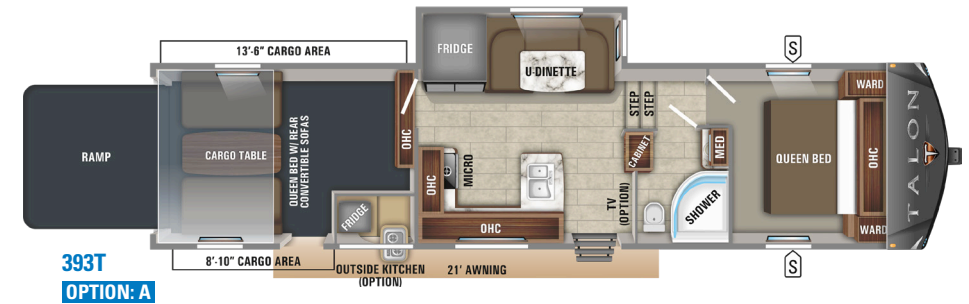
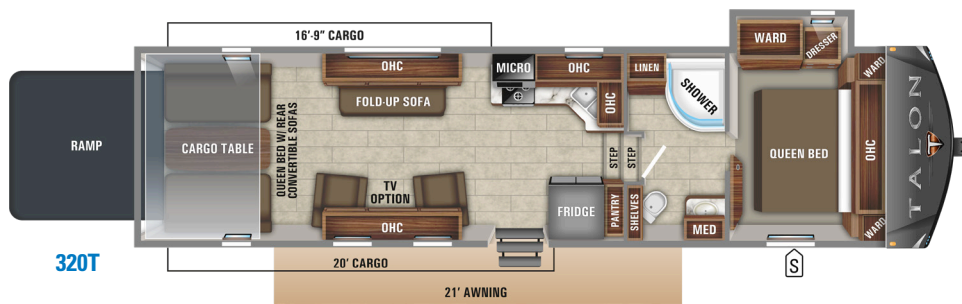
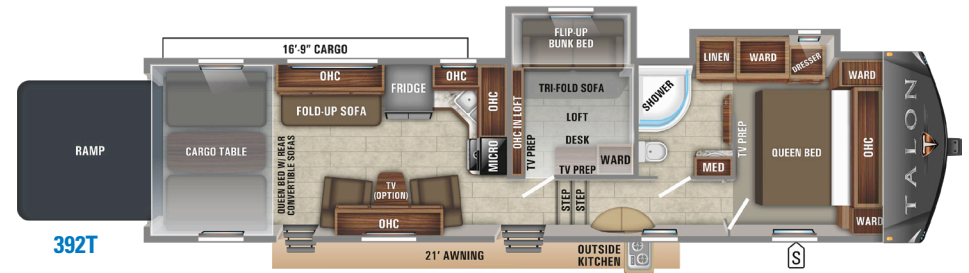
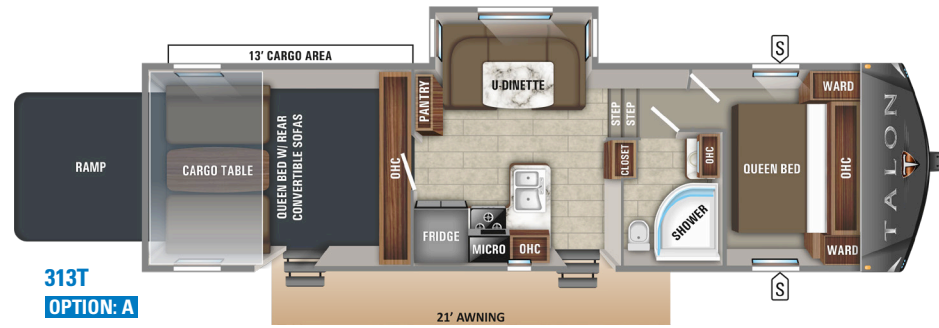


4113 KITCHEN



4212 MASTER BEDROOM

TALON FLOORPLANS



TALON SPECS

FLOORPLAN	EXTERIOR LENGTH	EXTERIOR TRAVEL LENGTH*	EXTERIOR WIDTH	EXTERIOR HEIGHT (WITH A/C)	INTERIOR HEIGHT (UPPER DECK)	UNLOADED VEHICLE WEIGHT	DRY HITCH WEIGHT	GROSS VEHICLE WEIGHT RATING	CARGO CARRYING CAPACITY	FRESH WATER CAPACITY (INCLUDES WATER HEATER)	GREY WASTE WATER CAPACITY	BLACK WASTE WATER CAPACITY	SLEEP CAPACITY
313T	39' 10"	38' 4"	8' 6"	13' 6"	6' 5"	10,800	2,280	16,000	5,200	142	87**	50	7 - 8
320T	39' 10"	38' 5"	8' 6"	13' 6"	6' 5"	10,675	2,323	16,000	5,325	142	50	50	7 - 8
392T	42' 5"	40' 11"	8' 6"	13' 6"	6' 5"	12,235	2,760	16,900	4,665	142	87**	50	10 - 12
393T	41' 5"	39' 11"	8' 6"	13' 5"	6' 5"	11,375	2,430	16,000	4,625	142	87**	50	7 - 8
403T	41' 5"	40' 0"	8' 6"	13' 6"	6' 5"	12,190	2,815	16,500	4,310	142	87**	87**	8 - 10
413T	41' 5"	40' 0"	8' 6"	13' 5"	6' 5"	11,960	2,715	16,500	4,540	142	87**	87**	8 - 10

*Distance from the pin box to the bumper; total exterior length may be longer. **Split tanks

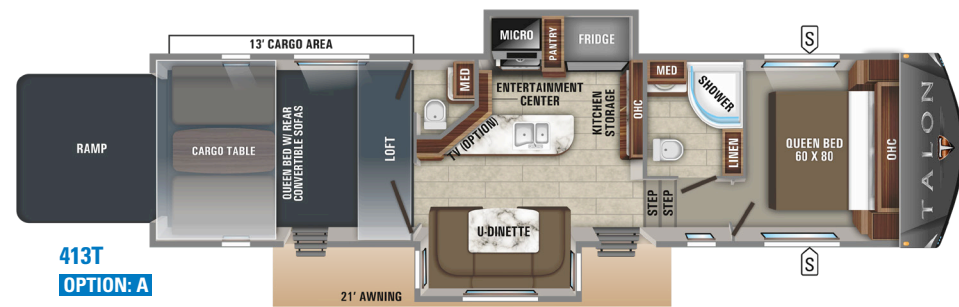
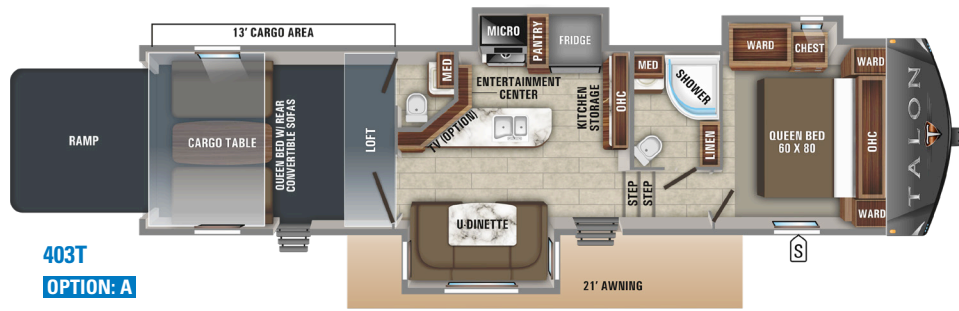
Unloaded Vehicle Weight (UVW): Sometimes referred to as "Dry Weight," UVW means the typical weight of this trailer as built at the factory. The UVW, as used in product literature and other promotional materials, does not include cargo, fresh water, propane, options or dealer-installed accessories.

Gross Vehicle Weight Rating (GVWR): GVWR means the maximum permissible weight of the trailer, including the UVW plus personal items, all cargo, fluids, options and dealer-installed accessories. The GVWR is equal to or greater than the sum of the UVW and the CCC.

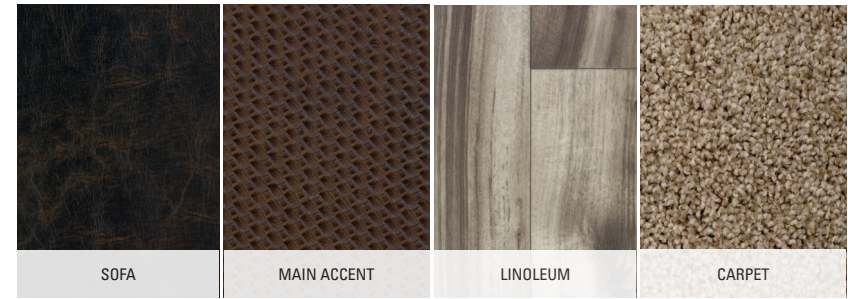
Cargo Carrying Capacity (CCC): CCC means the maximum weight of personal items, food, fresh water, propane, tools, other cargo and dealer-installed accessories that can be carried by the trailer. CCC is equal to or less than GVWR minus UVW. The addition of options will decrease the CCC.

Hitch Weight (HW): The hitch weight, as used in product literature and other promotional materials, does not include cargo, fresh water, propane gas, options or dealer-installed accessories. The addition of these types of items will either add to or subtract from the stated hitch weight.

It is important for your safety and enjoyment that your tow vehicle be adequately sized and equipped to tow and handle the GVWR of the RV you select. Review weights and rating of your tow vehicle and consult a competent advisor for questions or advice. Whether you are new to RVing or a veteran, get a feel for the performance of your tow vehicle before heading out on the roadways. When you tow an RV, you must drive differently than when you drive a single vehicle. Practice hooking up, driving, backing up and braking in a safe environment or seek out professional instruction. Jayco affixes a weight label to each RV which lists weight information for that vehicle. See specifications chart above.



INTERIOR DÉCOR

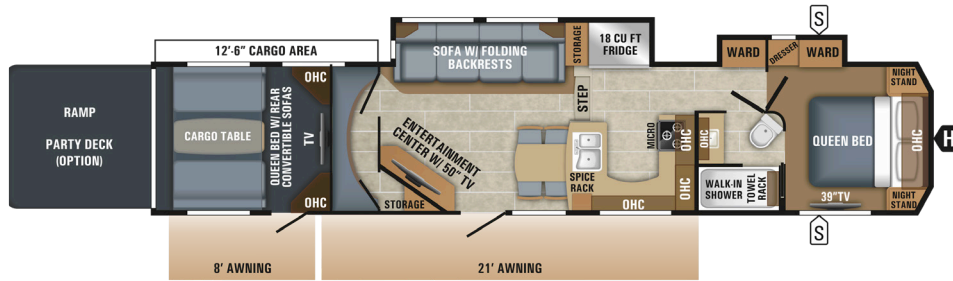


LEGEND	OPTION
STORAGE	A
TRAILER HITCH	SUPER SOFA
LAV BATHROOM SINK	
MED MEDICINE CABINET	
MICRO MICROWAVE	
OHC OVERHEAD CABINETS	
FRIDGE REFRIGERATOR	
WARD WARDROBE	

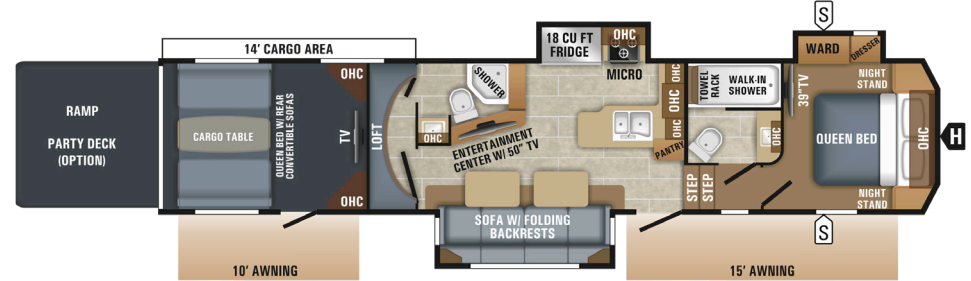
50TH ANNIVERSARY PACKAGE



SEISMIC FLOORPLANS



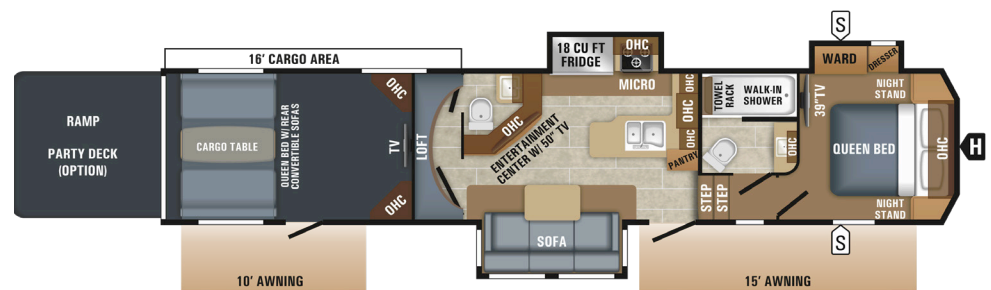
4013
OPTIONS: A, B



4114
OPTIONS: A, B



4113
OPTIONS: A, B



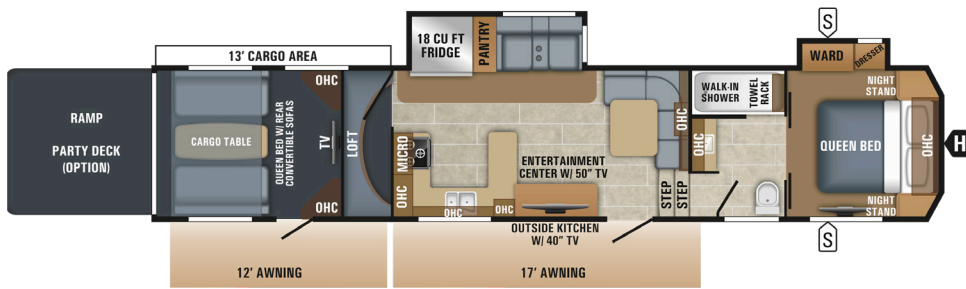
4116
OPTIONS: A, B

SEISMIC SPECS

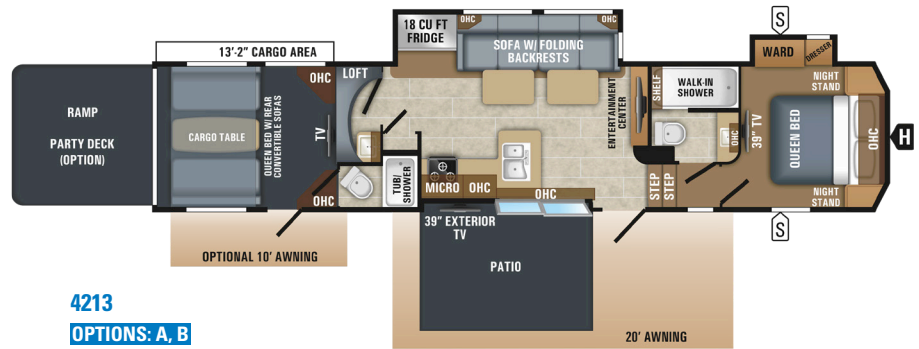
FLOORPLAN	EXTERIOR LENGTH	EXTERIOR TRAVEL LENGTH*	EXTERIOR WIDTH	EXTERIOR HEIGHT (WITH A/C)	INTERIOR HEIGHT (UPPER DECK)	UNLOADED VEHICLE WEIGHT	DRY HITCH WEIGHT	GROSS VEHICLE WEIGHT RATING	CARGO CARRYING CAPACITY	FRESH WATER CAPACITY (INCLUDES WATER HEATER)	GREY WASTE WATER CAPACITY	BLACK WASTE WATER CAPACITY	SLEEP CAPACITY
4013	45' 7"	44' 3"	8' 6"	13' 4"	6' 5"	15,845	4,000	20,695	4,850	146	87**	87**	8 - 10
4113	45' 7"	44' 3"	8' 6"	13' 6"	6' 5"	16,025	3,790	20,695	4,670	146	87**	87**	8 - 10
4114	45' 0"	43' 7"	8' 6"	13' 5"	6' 5"	15,800	4,035	20,695	4,895	146	87**	87**	8 - 10
4116	45' 1"	43' 8"	8' 6"	13' 4"	6' 5"	15,415	3,965	20,695	5,280	146	87**	87**	8 - 9
4125	45' 7"	44' 3"	8' 6"	13' 4"	6' 5"	15,630	3,685	20,695	5,065	146	87**	87**	7 - 8
4212	45' 0"	43' 7"	8' 6"	13' 5"	6' 5"	15,925	3,495	20,695	4,770	146	87**	87**	8 - 10
4213	TBD	TBD	8' 6"	TBD	6' 5"	TBD	TBD	TBD	TBD	146	TBD	TBD	8 - 10
4250	TBD	TBD	8' 6"	TBD	6' 5"	TBD	TBD	TBD	TBD	146	TBD	TBD	8 - 9

*Distance from the pin box to the bumper; total exterior length may be longer.

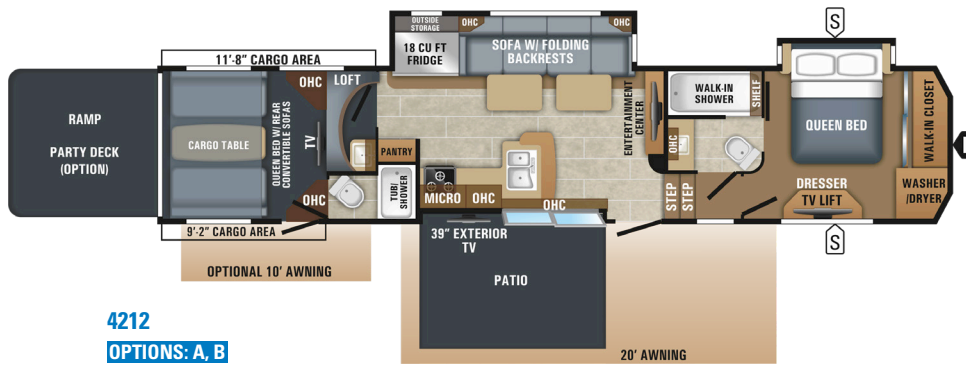
**Split tanks



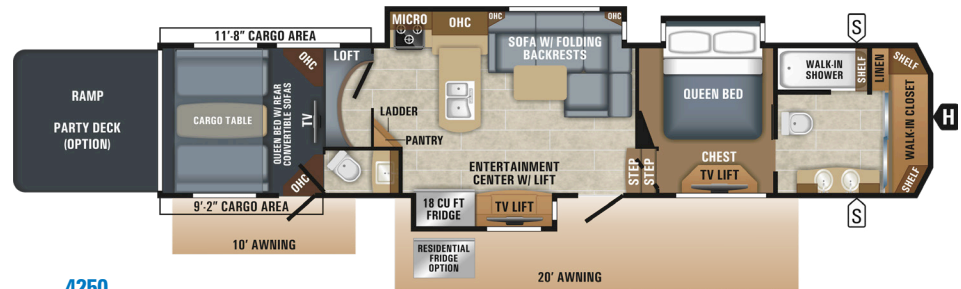
4125
OPTIONS: A, B



4213
OPTIONS: A, B



4212
OPTIONS: A, B



4250
OPTION: B

Unloaded Vehicle Weight (UJVW): Sometimes referred to as "Dry Weight," UJVW means the typical weight of this trailer as built at the factory. The UJVW, as used in product literature and other promotional materials, does not include cargo, fresh water, propane, options or dealer-installed accessories.

Gross Vehicle Weight Rating (GVWR): GVWR means the maximum permissible weight of the trailer, including the UJVW plus personal items, all cargo, fluids, options and dealer-installed accessories. The GVWR is equal to or greater than the sum of the UJVW and the CCC.

Cargo Carrying Capacity (CCC): CCC means the maximum weight of personal items, food, fresh water, propane, tools, other cargo and dealer-installed accessories that can be carried by the trailer. CCC is equal to or less than GVWR minus UJVW. The addition of options will decrease the CCC.

Hitch Weight (HW): The hitch weight, as used in product literature and other promotional materials, does not include cargo, fresh water, propane gas, options or dealer-installed accessories. The addition of these types of items will either add to or subtract from the stated hitch weight.

It is important for your safety and enjoyment that your tow vehicle be adequately sized and equipped to tow and handle the GVWR of the RV you select. Review weights and rating of your tow vehicle and consult a competent advisor for questions or advice. Whether you are new to RVing or a veteran, get a feel for the performance of your tow vehicle before heading out on the roadways. When you tow an RV, you must drive differently than when you drive a single vehicle. Practice hooking up, driving, backing up and braking in a safe environment or seek out professional instruction. Jayco affixes a weight label to each RV which lists weight information for that vehicle. See specifications chart.

LEGEND

	STORAGE	MICRO	MICROWAVE
	TRAILER HITCH	OHC	OVERHEAD CABINETS
LAV	BATHROOM SINK	FRIDGE	REFRIGERATOR
MED	MEDICINE CABINET	WARD	WARDROBE

OPTIONS

	A		B
	KING BED		21 CU FT RESIDENTIAL FRIDGE

INTERIOR DÉCOR

WALNUT		
	SOFA	MAIN ACCENT
GRANITE		
	SOFA	MAIN ACCENT
FLOORING		
	LINOLEUM	CARPET

OCTANE SL TRAVEL TRAILER

Customer Value Package (MANDATORY)

Nitrogen-filled Goodyear® Endurance tires
102 inch wide body construction
Aluminum rims
18 gal./hr. quick recovery gas/electric water heater
Convection microwave oven
AM/FM/CD/DVD/Bluetooth® with (2) interior speakers and (2) exterior marine-grade speakers
Stainless steel appliances
Seamless kitchen and bathroom countertops
Indoor/outdoor dinette table
Digital TV antenna
Pleated night shades
2 inch block foam floor, vacuum-bonded and laminated
I-Class™ cambered structural-steel I-beam frame
Magnum Truss™ Roof System
Super Lube™ axles
Nev-R-Adjust® self-adjusting brakes
Spare tire and carrier
Diamond plate rock guard
Outside shower
Black tank flush
LED taillights
Bar-lock latches with keyed ramp door locks
D-rings anchored to steel chassis
Stabilizer jacks (4)
Exclusive designer exterior graphics package
Ducted 13,500 BTU roof A/C
Matching Aztek Gray radius fiberglass front wrap and ramp door
Roof and side-mounted solar prep
Backup camera prep (in two locations)
8 cu. ft. double door refrigerator
Rear electric queen beds with rollover sofa, folding armrests, and cup holders
Jayco exclusive Simmons® mattress

Exterior Equipment

.024 Mesa-crimp exterior aluminum with color band
Colored fiberglass, radius-profile front wall
Keyed Alike™ lockable baggage doors
G20 dark tinted, safety glass windows
30 amp power service
Enclosed battery storage box with locking door
Systems monitor panel
Water heater bypass system
Water system winterization kit
LED exterior lights
Power awning with LED lights

Interior Equipment

Chocolate Maple wood cabinetry
Ball-bearing drawer guides, 75 lb. capacity with full drawer extension
2 burner range
Deep double bowl, stainless steel 50/50 sink with cutting board cover (1)
Auto ignition furnace with wall thermostat
Command center (select models)
USB charging port
Vinyl flooring throughout
ABS tub/shower surround
Glass shower door (select models)
A/C ducts in front bedroom (select models)
Under bed storage with gas struts (select models)
Fold away sleeper sofas (2, select models)
Power queen beds with rear convertible sofa and folding armrests with cup holders
LED lighted countertop edge
LED interior lights

Ramp & Cargo Equipment

Radius cornered ramp door, 2,500 lb. capacity, 96 inch wide ramp door opening
High intensity rear ramp lights (2)
Spring assist ramp door with non-skid flooring
Garage vent ports
Overhead storage cabinets

Options

Customer Value Package (MANDATORY)
Customer Value Package with 15,000 BTU roof A/C
Fiberglass sidewalls
Heated, enclosed underbelly
Foldaway dinette in place of doorside sofa (select model)
Freestanding table with (2) chairs in place of doorside sofa (select models)
Electric tongue jack
40 gallon fuel station
50 amp service with 2nd A/C prep (select models)
2nd 13,500 BTU A/C in bedroom (select models)
Retractable screen wall
Carpet in cargo area

TALON / SEISMIC FIFTH WHEEL

Talon
Seismic

Exterior Equipment

Exterior Equipment	Talon	Seismic
Whole-house LED lights	CVP	CVP
Enclosed and heated underbelly	CVP	CVP
Goodyear® 16-inch "BEAST" nitrogen-filled radial tires with aluminum rims	CVP	CVP
MORryde® CRE3000™ suspension system	CVP	CVP
40-gallon fuel tank with timer	CVP	CVP
Electric 6-point auto-leveling system	50	CVP
Frameless Windows	50	CVP
Painted front cap with Jayco logo and LED lights	S	CVP
3/8-inch roof decking on 5-inch crowned truss rafters (R-30)	S	S
5/8-inch tongue-and-groove plywood main floor decking	S	S
12-inch I-Class™ cambered structural-steel I-beams	S	S
Folding roof ladder	S	S
Climate Shield™ insulation package	S	S
Magnum Truss™ Roof System	S	S
Keyed Alike™ single key for all doors/locks	S	S

SEISMIC COMPETITIVE ADVANTAGES



Patent pending optional automated rear ramp door

Jayco's industry-leading 2 year limited customer warranty vs. 12 month warranties (industry standard)

Undercarriage LED light package with smartphone app control

Optional quick-set ramp patio system with patio steps

Patent-pending, optional Tailgater Camp Kitchen

Magnum Truss Roof System: the strongest rated roof in the industry

Standard Astro-Foil™ insulation on bath deck in pass-through storage, slide room floors and roof, main floor, ceiling and bedroom areas

First to offer full 2 inch block foam, fully insulated and vacuum bonded garage floor

Only manufacturer to list our temperature ratings with full water in our tanks for extended living (Dometic Freeze Chamber-tested)

Gelcoated slick fiberglass sidewalls

Tread Lite® aluminum quad entry steps

MORryde rubberized suspension with full 3 inch suspension travel and Goodyear nitrogen filled tires

Standard MORryde rubberized king pin for extra shock resistance

Whole house entertainment with speakers throughout

Oversized automotive style frameless windows with 80 percent tinted safety glass

Black tank flush for half bath and second full bath

Industry first 39 inch pop up TV in the bedroom with oversized panoramic window (bed slides only)

Real hardwood fold away bar stools (N/A in 4113)

Segment exclusive walk-in shower

Available dishwasher (select models)

Solid-surface countertops in kitchen/main bathroom

21 cu. ft. residential refrigerator with ice/water and 1,800-watt inverter

MCD roller day/night shades in place of pleated night shades with strings

Residential polished-glass backsplash running full length and height in kitchen

Standard 15,000 BTU Whisper Quiet A/Cs (bedroom, living room); optional third 15,000 BTU A/C in garage (non-ducted)

Room for up to 6 house batteries with disconnect

Outside shower	S	S
Roof and side-mounted solar prep	S	S
Backup camera prep (2) locations	S	S
Stor-Galore™ heated and insulated pass-through storage	S	S
Dexter® 7,000-lb. axles with Nev-R-Adjust® brakes	S	S
Dexter heavy-duty shackles with wet bolt fasteners and bronze bushings	S	S
5,500-watt Onan® generator (CARB-certified)	0	CVP
Extreme Weather Package (heated holding tank pads & freshwater line wraps with interior illuminated switch	0	0
Outside camp kitchen (393T only)	0	
Electric side awnings with LED lights (1)	CVP	
Electric side awnings with LED lights (2)		CVP
27-gallon generator fuel tank with timer		CVP
MORryde® pin box		S
Exterior TV hookup in basement area		S
Hydraulic disc brakes		0
Slideout Awnings		0
Patent pending Outside Tailgater Camp Kitchen		0
Interior Equipment		
Jayco-exclusive residential Simmons® mattress	CVP	CVP
Battery disconnect	CVP	CVP
50-amp service	CVP	S
Under-mounted, 50/50 stainless-steel sink	CVP	S
Ball bearing drawer guides, 75-pound capacity	S	S
Stainless, 3-burner range-top with glass top	S	S
Gas-strutted, under-bed storage	S	S
Bathroom power vent	S	S
Bath skylights	S	S
Solid-surface countertops	50	S
15,000-BTU bedroom A/C (Seismic A/C is Whisper Quiet)	0	CVP
Pleated night shades	CVP	
MCD® roller day/night shades		CVP
40" LED TV in living area	0	
50" LED TV in living area		CVP
8 cu ft. double-door refrigerator	CVP	

18 cu ft refrigerator		CVP
Electric fireplace		CVP
High-end residential sofa with heat massage, LED lights, folding backs, cup holders and USB/110V outlets		CVP
Genuine stone and polished glass backsplash		CVP
30-inch convection microwave		CVP
Residential style walk-in shower (Some Models)		S
Pop-up USB charging port in kitchen with 110V outlet		S
21 cu. ft. residential refrigerator		0
King bed		0
Dishwasher (4113 only)		0
Ramp and Cargo Equipment		
Pull-down rear screen	CVP	CVP
Steel backers in floor for wheel chocks	CVP	CVP
2" block-foam insulated garage floor	CVP	CVP
Rear electric queen beds with rollover sofa, folding armrests and cup holders	CVP	CVP
Tuff-ply, rubberized garage floor liner	S	S
LED high-intensity, flush-mounted ramp lights	S	S
Garage D-rings mounted to steel frame	S	S
Hinged spring-assist, radius-cornered ramp door, 2,500-pound capacity, 93-3/8-inch-wide opening with anti-slip, non-skid flooring	S	S
Cargo area carpet	0	0
Party Deck with "Quick Set" folding rails and rear entry steps	0	
Party Deck with "Quick Set" folding rails, rear entry steps and electric awning		0
15,000-BTU drop-in cargo-area 3rd A/C		0
Automated rear ramp door		0
Three-season removable garage wall		0
32" LED TV in garage		CVP
Beaver tail garage storage		CVP
Furrion Lit Bluetooth® speaker with flashlight and charging dock		CVP

S - Standard **0** - Optional **CVP** - Customer Value Package (MANDATORY)

50 - 50th Anniversary Package (MANDATORY)

5-STAR HANDLING PACKAGE (Seismic Only)

The 5 Star Handling Package is a Jayco exclusive, a powerful blend of high-end components that make pulling a luxury fifth wheel a breeze.



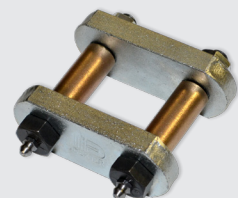
DEXTER AXLES WITH NEV-R-ADJUST BRAKES

The Benchmark of the trailer industry!



MORRYDE PIN BOX

Allows pin box to travel forward and backward as well as side-to-side, creating a smoother tow.



DEXTER HEAVY-DUTY SHACKLES WITH WET BOLT FASTENERS AND BRONZE BUSHINGS

Resists the wear-and-tear of towing.



MORRYDE RUBBERIZED SUSPENSION SYSTEM

Better absorbs and isolates road shock.



GOODYEAR BEAST TIRES

Made in the U.S.A. and featuring the patented Durawall® technology.



JAYCO'S ROOF vs OTHER ROOFS

4,500 POUNDS ON A JAYCO ROOF VS. OTHER ROOFS

50% Stronger!



CLIMATE SHIELD

Extend your camping season with the Jayco Climate Shield.

It protects against extreme heat and extreme freezing—even in temperatures as high as 100 degrees or as low as zero degrees (Fahrenheit).*

LIVING ROOM

0°F 70°F
100°F 69°F

KITCHEN

0°F 69°F
100°F 70°F

BATHROOM

0°F 71°F
100°F 68°F

HOLDING TANK

0°F 60°F
100°F 72°F

BEDROOM

0°F 71°F
100°F 71°F

*Jayco tested fifth wheels in zero degrees F and 100 degrees F weather over an extended period of time in a controlled environment, and all functions of the coach were fully operational. Testing was done in a completely controlled environment; therefore, temperatures during testing may not represent actual temperatures in nature and cannot account for elements such as wind or moisture. In actual use, unit may not perform as well. Supplier of cooling components does not guarantee anything better than 20 degrees difference from ambient temperature. In addition, outside components are subject to freezing and require steps to properly insulate. Jayco's limited warranty does not cover damage caused by freezing. To learn more about Climate Shield and testing done by Jayco, visit www.jayco.com.



Meet your Jayco Dealer _____

Travel with Confidence _____

Follow Jayco
#Jayco50



Jayco, Inc. | P.O. Box 460 | Middlebury, IN 46540 © **RVIA** See dealer for further information and prices. All information in this brochure and on www.jayco.com is the latest available at the time of publication approval. Jayco reserves the right to make changes and to discontinue models without notice or obligation. Photography may show optional equipment or props used for decoration purposes only. RVs built for sale in Canada may differ to conform to Canadian codes. JAYCO and the JAYCO BIRD IN FLIGHT are registered trademarks of Jayco, Inc. Printed in USA 15K RB 09/18 © 2018 Jayco, Inc. 274884-1



At Jayco, we build our RVs to handle every adventure, then back them with our industry-leading 2-year limited warranty. We, with support from our select partners, have you covered for **2 camping seasons**. That's **730 days**. You won't find a better warranty in the business, because the only strings we attach are those that deliver the ultimate in reliability. That's the Jayco difference. So go explore. For a copy of our 2-year limited warranty with complete terms and conditions, please contact your local Jayco dealer.